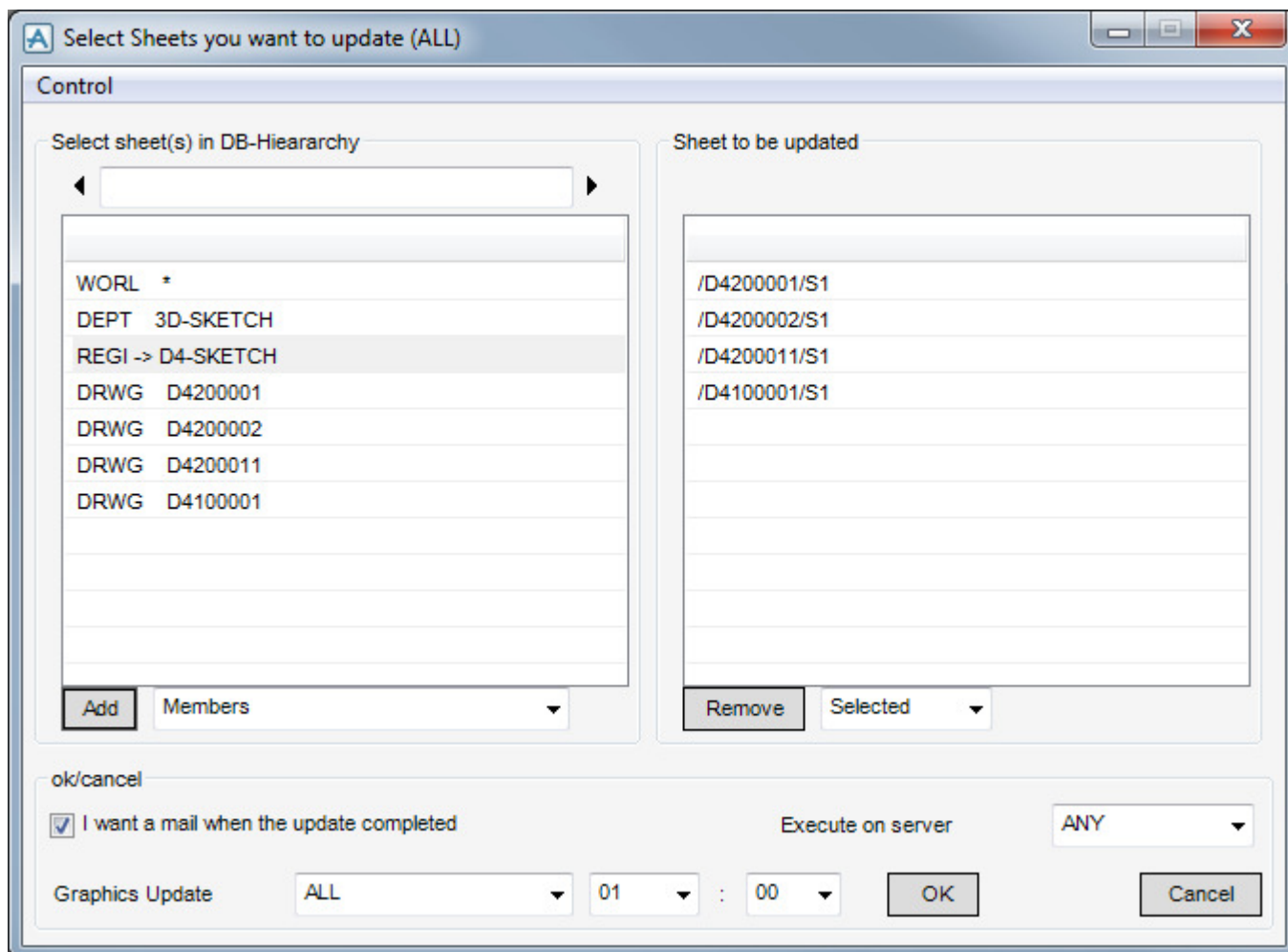


## Batch Update of Drawing

Updating drawings in E3D Draw or PDMS Draft can be very timeconsuming. This program package make it possible for you to use spare license and computers to update drawings maybe in the nighttime.

This first program is a PML tool to select drawings to be updated:



This code is setting jobs in a queue – and serverprocesses on different computers can access this queue and do the update job.

To start batch servers and monitor the jobs, use the program described on next pages.

## Batch Draft Monitor

In the first window you can see the jobs waiting to be processed. If you are the requester (the one putting them in the queue) you are able to delete them from the queue, while processing has not started. You can see the "Delete Job" button is activated.

**Draft Queue:**

Project	name	Drawing	Requester	Server	Queued	Time	Earliest Start Time
2013	WID	D5215002	CANIN	ANY	27-06-2016	11:21	ASAP
2013	WID	D5216001	CLIFF	ANY	27-06-2016	11:21	ASAP
2013	WID	D5216002	LKLA	ANY	27-06-2016	11:21	ASAP
2013	WID	D5217001	ARK	ANY	27-06-2016	11:21	ASAP
2013	WID	D5218002	Kat	ANY	27-06-2016	11:21	ASAP
2013	WID	D5219001	MUS	ANY	27-06-2016	11:21	ASAP

**Processing job(s) now:**

Project	name	Drawing	Requester	Start Date	Start Time	Server	Queue	Server started by
---------	------	---------	-----------	------------	------------	--------	-------	-------------------

**Server(s) running now**

Server	Queue	Started by
--------	-------	------------

**Start Batchserver on this Computer**

Batch Server no. 1 No. 2 No. 3 No. 4 No. 5

**Stop Batchserver on this Computer**

Batchserver no. 1 No. 2 No. 3 No. 4 No. 5

Clean up everything Dismiss

Delete Job

Help

If you are Administrator – you can delete jobs not requested by you. If you try, you will get the warning:

**Confirmation**

This is not your job. Do you really want to delete a job you not ordered?

Ja Nej Annuller

Next window show what processing right now

Processing job(s) now:

Project	name	Drawing	Requester	Start Date	Start Time	Server	Queue	Server started by
2013	WID	D2101001	kek	18-02-2016	09:18	PLANTCON15	3	kek
2013	WID	D2100001	kek	18-02-2016	09:18	PLANTCON15	2	kek
2013	WID	D2900001	kek	18-02-2016	09:18	PLANTCON15		kek

If a server break down – or something else stops the se unauthorized the job will be coloured read or light read.

Processing job(s) now:

Project	name	Drawing	Requester	Start Date	Start Time	Server	Queue	Server started by
2013	WID	D2100001	kek	12-02-2016	08:11	PLANTCON...	a	kek

Server(s) running now

If you are the requester of the job or Administrator, you can click on the job line, right click on the mouse and choose and move the job back into the queue – or delete it.

Processing job(s) now:

Project	name	Drawing	Requester	Start Date	Start Time	Server	Queue	Server started by
2013	WID	D2100001	kek	12-02-2016	08:11	PLANTCON	a	kek

Delete this job from this list

Move this job back into the Draft Queue

Do nothing

If you are an Administrator, you are able to delete running jobs (white jobs) – like this:

Processing job(s) now:

Project	name	Drawing	Requester	Start Date	Start Time	Server	Queue	Server started by
2013	WID	D5214001	kek	27-06-2016	11:29	PLANTCON15	2	kek
2013	WID	D5212001	kek	27-06-2016	11:29	PLANTCON15		kek

Delete this job from this list

Do nothing

If you do this – the server running the job will be ready to take new jobs from the queue. On the server you might see the job continue – but it will never finish, while the user is expunged.

Next window show which servers running right now. If the server seems to be stopped, and the colour will change to light red – and after one hour totally disappear from the list.

Server(s) running now

Server	Queue	Started by
PLANTCON15	4	kek
PLANTCON15	3	kek
PLANTCON15	2	kek
PLANTCON15		kek

Using these buttons, you can start or stop batch server(s) on this computer. On Citrix only the two first button is active. (Because Citrix only registered with two CPU).

Start Batchserver on this Computer

Batch Server no. 1 No. 2 No. 3 No. 4 No. 5

Stop Batchserver on this Computer

Batchserver no. 1 No. 2 No. 3 No. 4 No. 5

Clean up everything

If you are Administrator – this button will be on the form: - if you push this button, the queue will empty – and all running jobs will be killed/users expunged – but all servers will continue after few minutes.